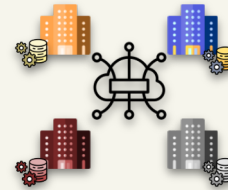


# Smart System



connects previously separate systems  
and organisations to deliver new services  
or products

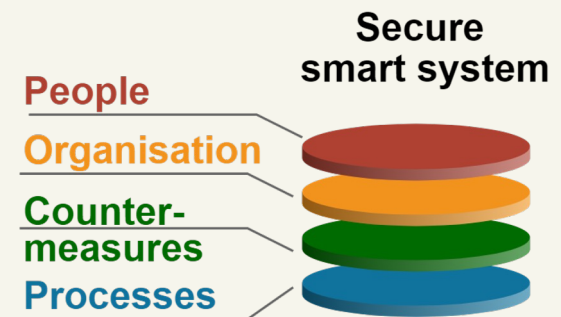
Smart city  
Smart traffic management  
Industry 4.0  
Smart healthcare  
Smart home  
...

any system using AI  
a standalone system  
a set of isolated technologically  
advanced systems

# FISP-ProCOP

Framework for Information  
Security and Privacy Management

- Based on ISACA' BMIS, McCube, RMIAS
- Aligned with ISO/IEC 27001



# FISP-ProCOP:

Framework for information security and privacy management –  
Processes, security & privacy Countermeasures, Organization, and People




Guides with attributes in the FISP-ProCOP matrix

Explores components in the smart system

Guides with questions for analysing the results

Dimension	Category	Attribute	
P. People	PA. Actors	Actors, stakeholders, entities	
	PR. Relationships	Goals, tasks, motives	
O. Organisation	OS. Strategy	Relationships and dependencies between actors	
	OC. Formal Constraints	Purpose for the system usage, org. design & strategy	
	OI. Information Involved	Challenges to address	
		Legislation, regulation, standard	
Type of information used			
C. Sec. & Privacy Countermeasures	CP. Policies & Practices	How the information is manipulated	
		Security criteria	
	CE. Training & Education	Privacy objectives	
		CT. Technology	Policies & practices
			Training & education
			Architectural measures
Use case-oriented technological measures			
Pr. Processes	PrL. System Lifecycle	Cryptographic building blocks	
		Others technological measures	
	PrU. Usage of the System	Security as a part of the system lifecycle	
		Use cases of the system as a part of the business processes	

# FISP-ProCOP

WHY? 

To depict the state of information security and privacy management in your organisation

RESULT? 

- Documentation of the state
- Identified inconsistencies between measures for securing a smart system



FOR WHOM? 

Coordinates security management efforts between DPO, CISO, Security Architect & Business Analyst

# HOW TO USE

- ❖ Fill in the questionnaire
- ❖ We will help you analyse and find inconsistencies



<https://forms.gle/EMH3AEGBwc5BnZ9i8>

# RE-USE LATER

Use the questionnaire template and analyser

Let us know about your experience

<https://forms.gle/qspr3arJn5uxY6pR6>

